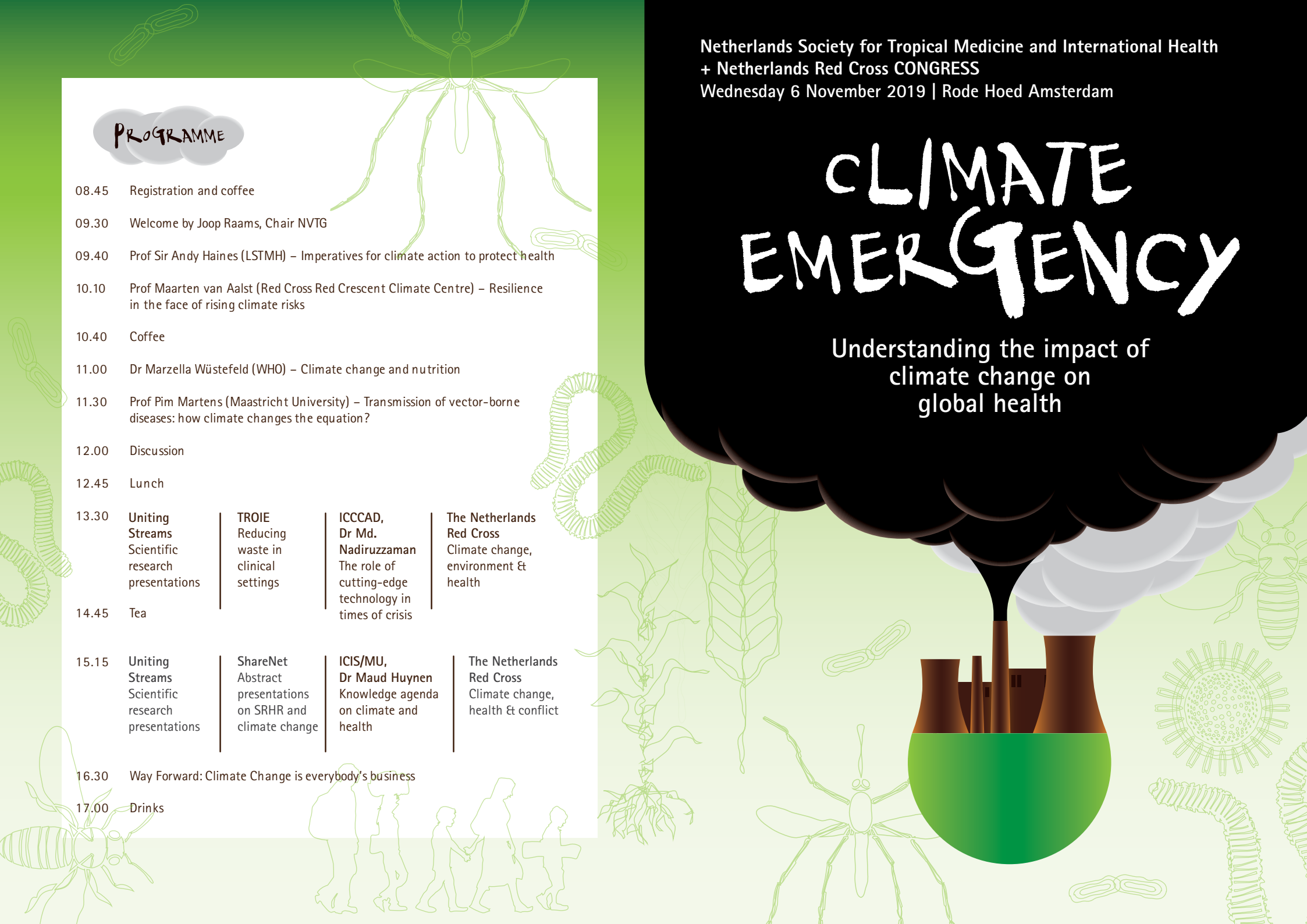


PROGRAMME

- 08.45 Registration and coffee
- 09.30 Welcome by Joop Raams, Chair NVTG
- 09.40 Prof Sir Andy Haines (LSTMH) – Imperatives for climate action to protect health
- 10.10 Prof Maarten van Aalst (Red Cross Red Crescent Climate Centre) – Resilience in the face of rising climate risks
- 10.40 Coffee
- 11.00 Dr Marzella Wüstefeld (WHO) – Climate change and nutrition
- 11.30 Prof Pim Martens (Maastricht University) – Transmission of vector-borne diseases: how climate changes the equation?
- 12.00 Discussion
- 12.45 Lunch
- 13.30 **Uniting Streams** Scientific research presentations
- | | | |
|---|--|--|
| TROIE
Reducing waste in clinical settings | ICCCAD, Dr Md. Nadiruzzaman
The role of cutting-edge technology in times of crisis | The Netherlands Red Cross
Climate change, environment & health |
|---|--|--|
- 14.45 Tea
- 15.15 **Uniting Streams** Scientific research presentations
- | | | |
|--|--|---|
| ShareNet
Abstract presentations on SRHR and climate change | ICIS/MU, Dr Maud Huynen
Knowledge agenda on climate and health | The Netherlands Red Cross
Climate change, health & conflict |
|--|--|---|
- 16.30 Way Forward: Climate Change is everybody's business
- 17.00 Drinks

CLIMATE EMERGENCY

Understanding the impact of climate change on global health



CLIMATE EMERGENCY AND HEALTH

Climate Change is already impacting human health and is bound to get worse. Worldwide people are facing the effects of environmental change in their daily lives because a lack of clean air, safe drinking water, secure shelter and insufficient food. Extreme heat contributes directly to deaths from cardiovascular and respiratory diseases. Globally the number of weather-related natural disaster disasters more than tripled over the past fifty years, among others resulting in increasing levels of malnutrition and undernutrition and in forced migration heightening the risk of mental disorders and communicable diseases. Climatic conditions strongly affect water- and vector-borne diseases.

Measuring the impact of these changes can only be approximate and while all populations will be affected by climate change, some are more vulnerable than others. The Paris Agreement in 2015 definitely was a major political step in reducing the risks of climate change, however the (health) impact of climate change hugely exceeds the progress we are making. Time to act is now.

MORNING SESSIONS

This symposium aims to take stock of progress and to look at promising responses to alter the current scenario. In the morning plenary session prominent scholars on the intersect of climate change and health will give an overview of up-to-date knowledge on climate/health, present evidence and possible solutions to emerging issues in the debate: **Prof Sir Andy Haines** (London School of Tropical Medicine and Hygiene), **Prof Maarten van Aalst** (Red Cross Red Crescent Climate Centre), **Dr Marzella Wüstefeld** (World Health Organization), and **Prof Pim Martens** (Maastricht University). **Anneke Wensing**, activist and change-maker chairs the morning programme.

AFTERNOON SESSIONS

The afternoon parallel sessions are varied, with:

- Abstract presentations organised by **Uniting Streams**.
- Session on the interface between Sexual and Reproductive Health and Rights (SRHR) & climate change by **Share-Net Netherlands**.
- A presentation of the Netherlands Knowledge Agenda on Climate and Health by **Dr Maud Huynen** (International Centre for Integrated Assessment and Sustainable Development/ICIS, Maastricht University).
- A discussion on the role of cutting-edge technology in times of climate change crisis by **Dr Md. Nadiruzzaman** (International Centre for Climate Change and Development, Bangladesh).
- Sessions organized by the **Netherlands Red Cross** on climate change, environment & health, and climate change, health and conflict.
- In an interactive session **TROIE**, the society for medical doctors in global health and tropical medicine, will look at ways to reduce waste in clinical settings.

REGISTRATION

Early online registration (until **6 October 2019**): www.nvtg.org. The early registration fee is only valid for participants who have completed payment before **6 October 2019**. Late registration (after 6 October 2019): online at www.nvtg.org or at the symposium information desk on 6 November 2019.

The number of participants may be limited: register in time!

FEES

	EARLY ONLINE REGISTRATION	LATE REGISTRATION (ON-SITE)
NVTG-members	95	110
Students	65	80
PHD students	80	95
Other participants	115	130

Registration and payment: follow the instructions on the NVTG site: www.nvtg.org/wat-we-doen/symposium.

CALL FOR ABSTRACTS

(Uniting Streams and Share-Net sessions)

During the afternoon programme parallel sessions will be reserved for oral presentations selected from submitted abstracts. Researchers of all seniority, including (PhD) students, are invited to submit abstracts in English describing original field research in any subject of global health, including but not limited to: sexual and reproductive health and rights (SRHR), poverty-related diseases (malaria, HIV, TB, etc.), neglected tropical diseases, medical sociology / anthropology, entomology, health economics, health policy and health systems research. Early career researchers (Master or

PhD students) are particularly encouraged to submit an abstract. Oral presentations will be selected on the basis of abstract quality. Abstracts should be submitted in English; for an abstract form see www.unitingstreams.com and www.share-net.nl. Please send completed forms to unitingstreams@gmail.com before 25 September 2019.

Accreditation pending

AUDIENCE

- NVTG members
- Professionals in the field of global health, tropical medicine, humanitarian assistance
- Professionals from universities, research and knowledge institutes
- (PhD) Students in Global Health, Medicine, AIGT in training, others

ORGANIZERS

nvtg.org / rodekruis.nl / unitingstreams.org / troie.nl / share-net.nl

VENUE

Rode Hoed is located in the city centre of Amsterdam (Keizersgracht 102), at 15 minutes walking distance from the Central Station. See www.rodehoed.nl for directions.